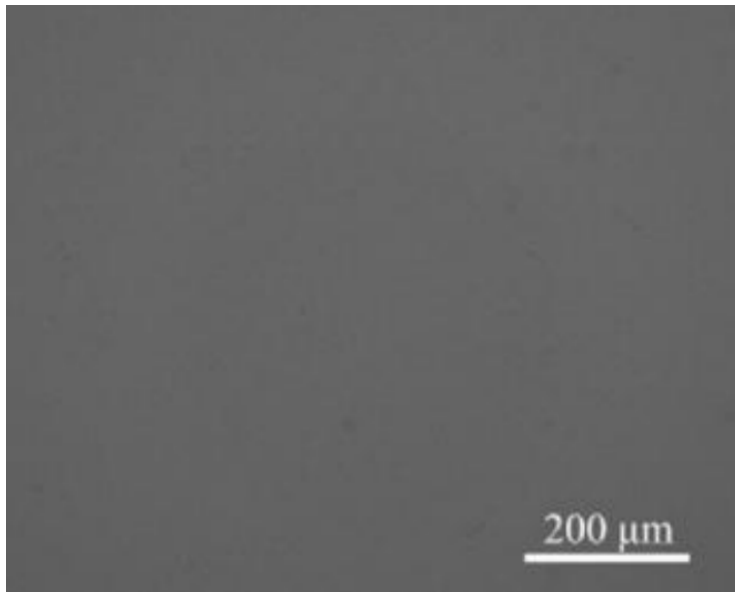


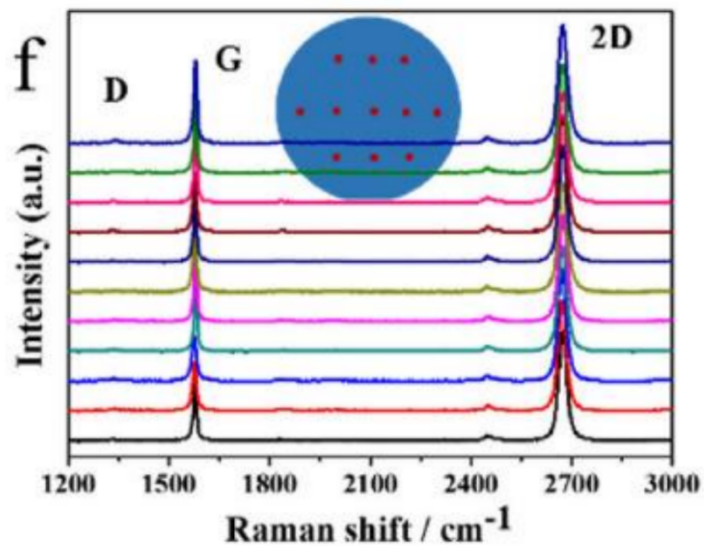
# 氧化硅单层单晶基底石墨烯

特点:

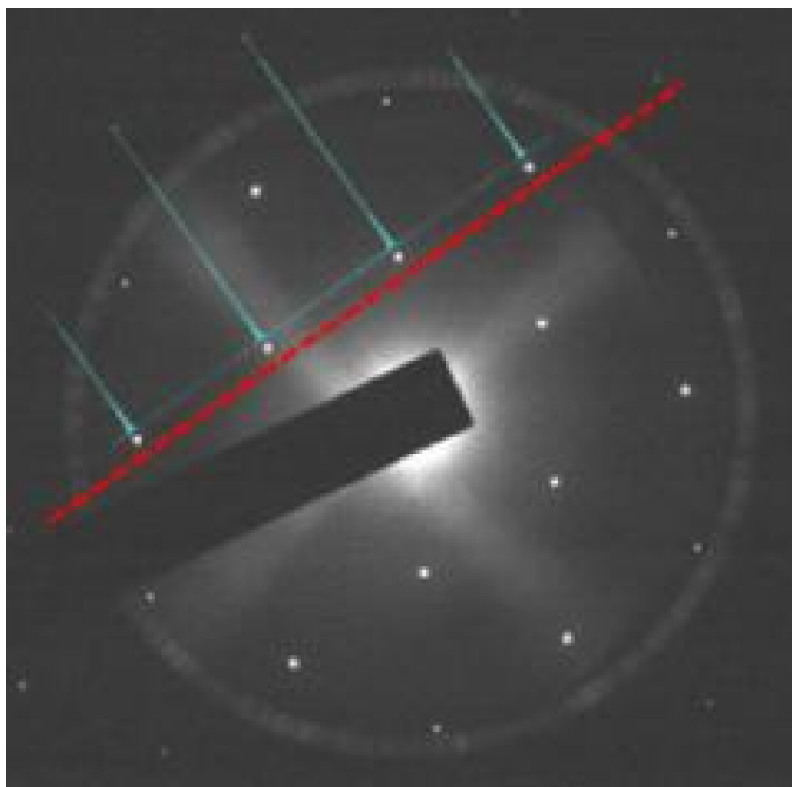
- 1、可以实现单层、双层、三层石墨烯的生长及转移。
- 2、单层覆盖率可以达到98%以上。
- 3、双层覆盖率达到95%以上，AB堆垛。
- 4、三层覆盖率90%以上，ABA堆垛。
- 5、基底上铜下镍，总厚度500nm左右。



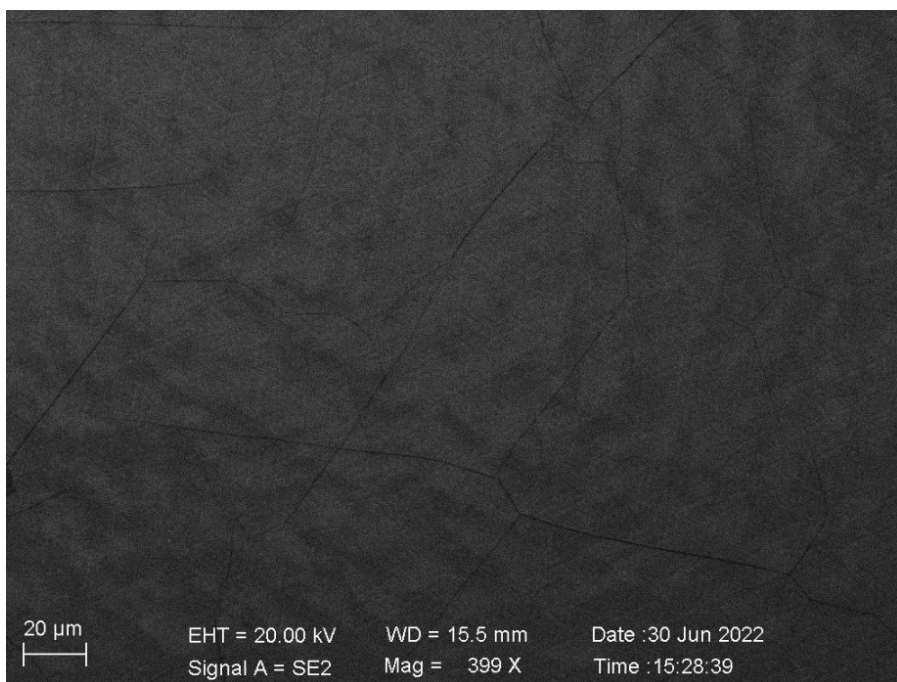
单层单晶石墨烯SEM



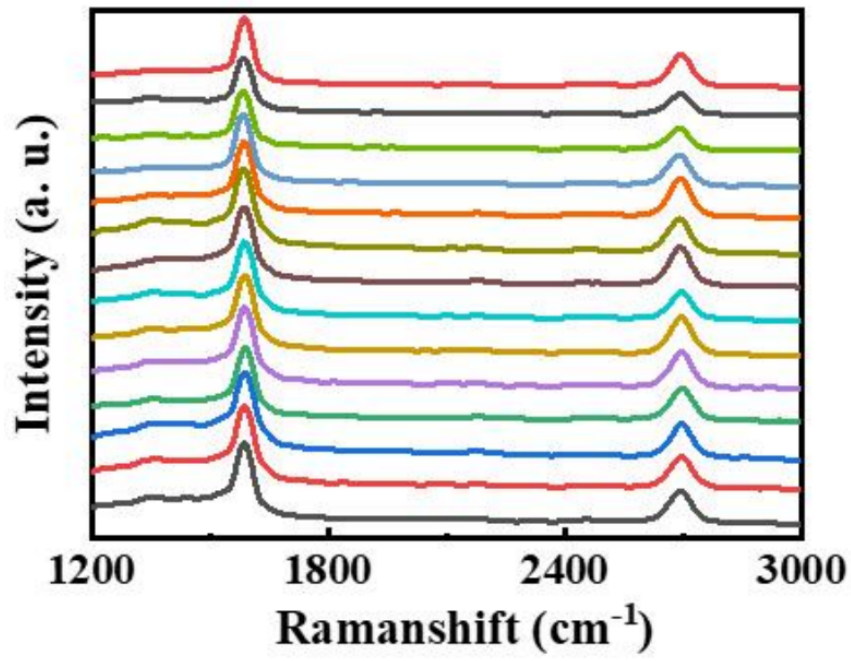
单层单晶石墨烯拉曼



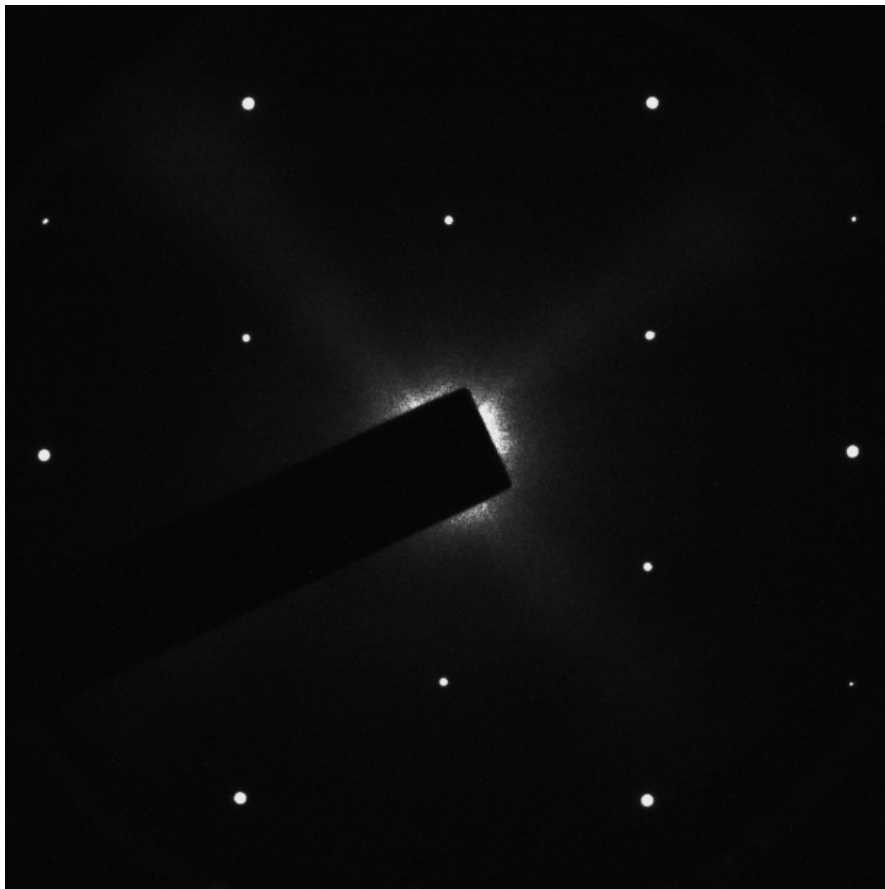
单层单晶石墨烯SAED



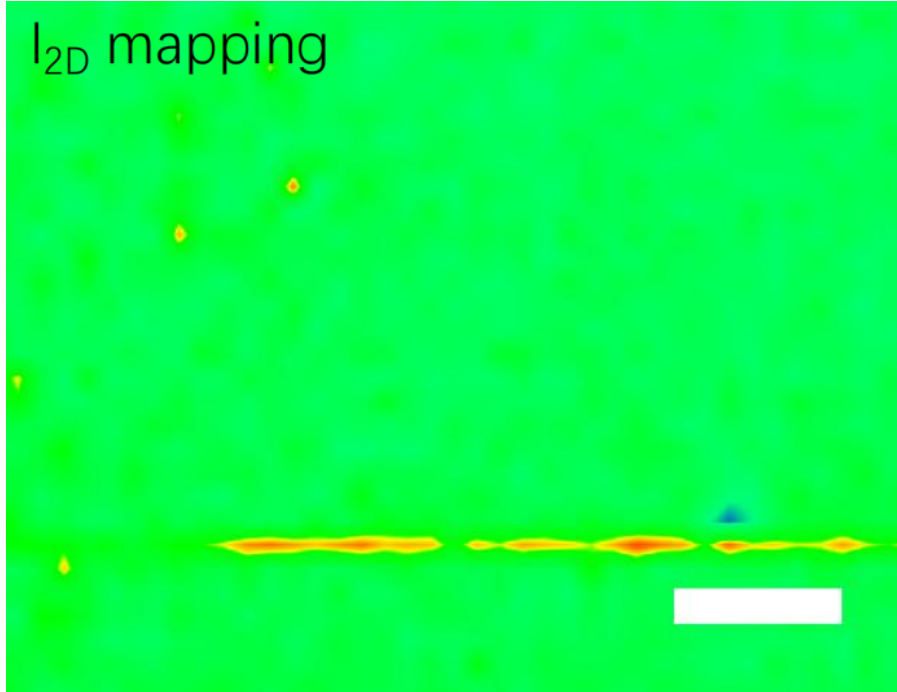
双层单晶石墨烯SEM



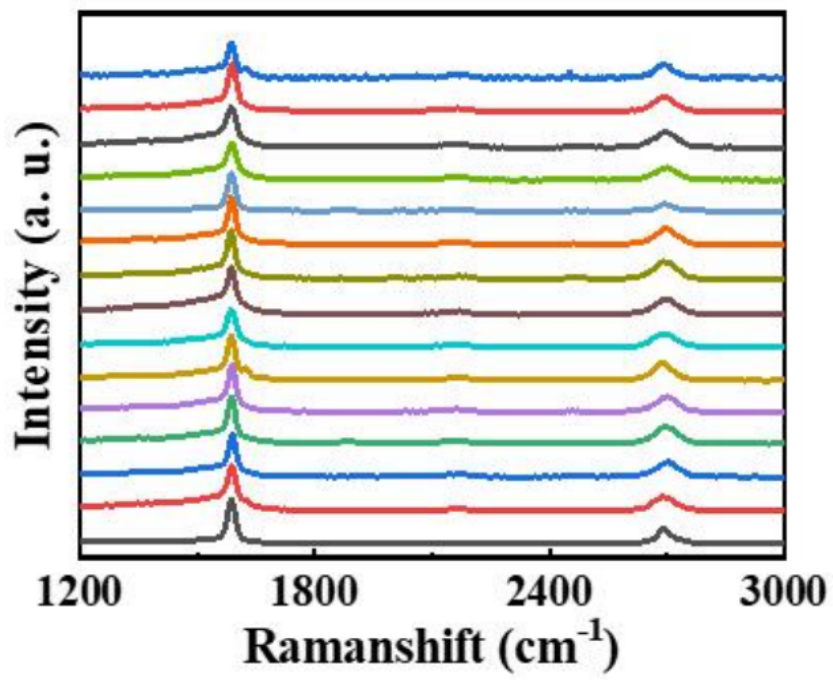
双层单晶石墨烯拉曼



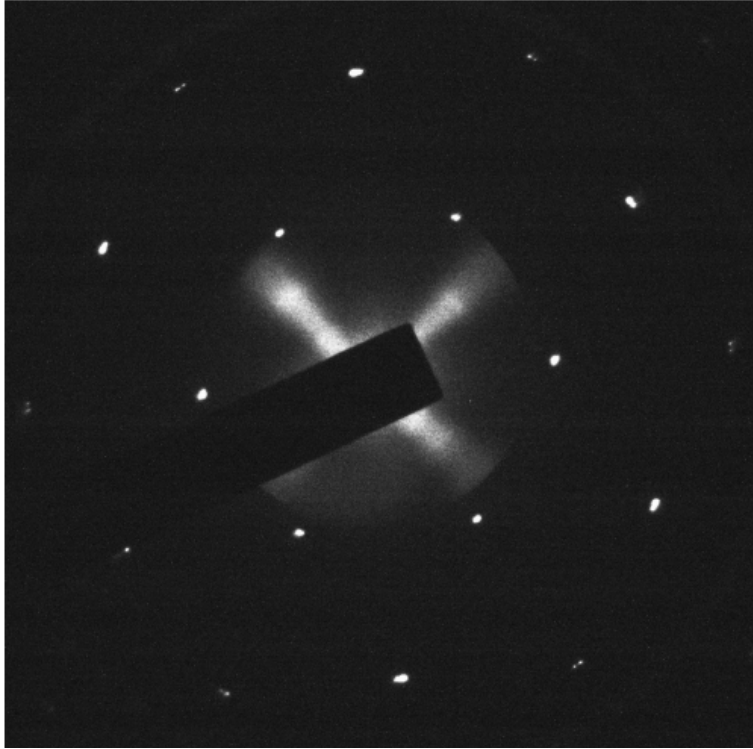
双层单晶石墨烯SEAD



三层单晶石墨烯二



三层单晶石墨烯拉曼



三层单晶石墨烯SEAD